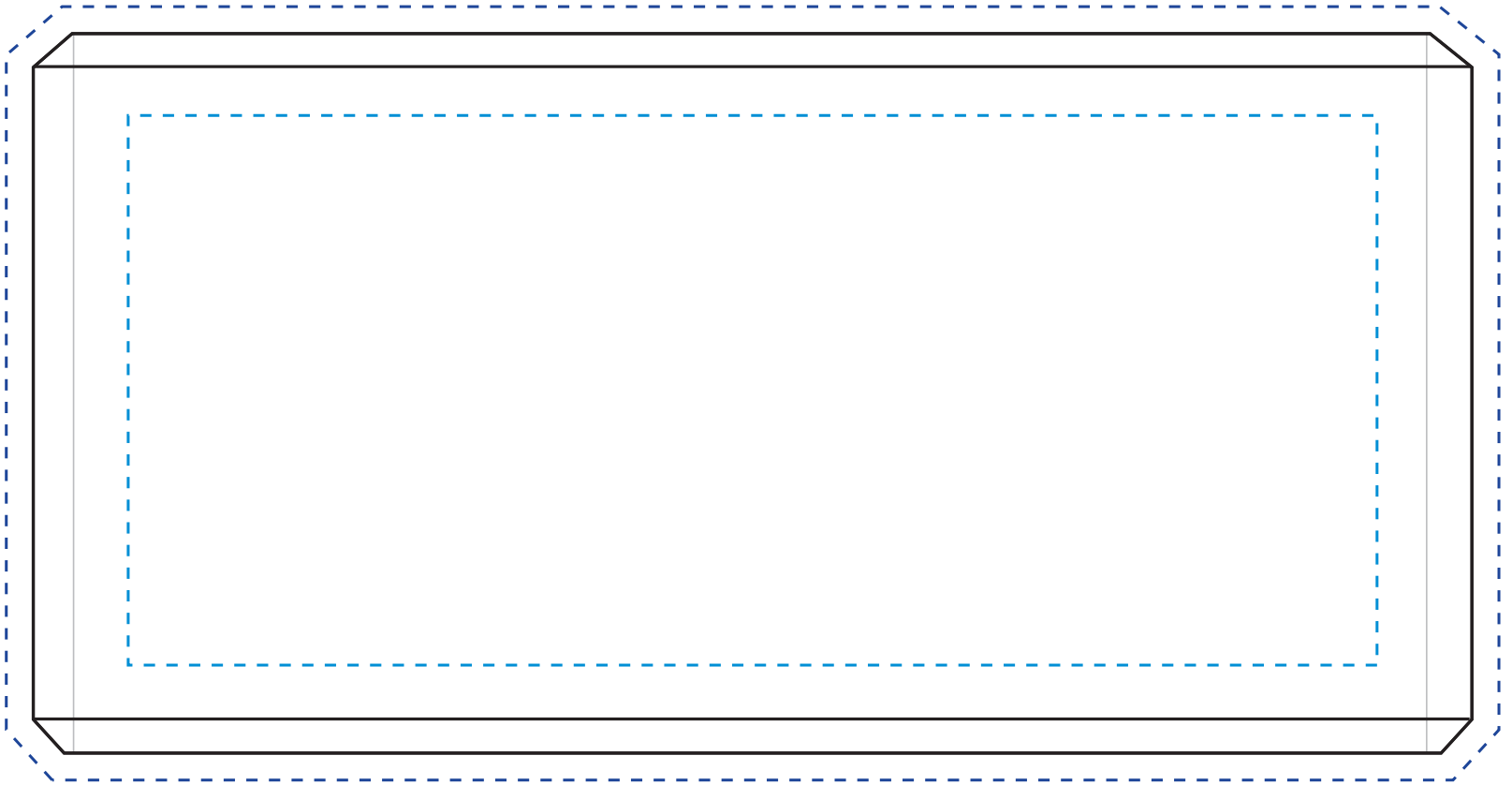


REVERSE ETCH (on flat back side)

Optional - Front Etch (on curved front side)

**Optional - Illumachrome: Reverse (on flat back side)**



## 4002 WEXFORD AWARD 8" W

Etch and Print area on the back will magnify and distort  
due to the curvature on the front.

(Be cautious using Faces, People and Logos they will distort) DO NOT use text or logos near edges of piece.

Blue line represents the max etch image area.

Dark Blue line represents the Illumachrome image area.  
Illumachrome Art should bleed approx. 1/8" over the piece edges.

View from Top

